



VIL-mtd

Veneer inspection line

TECHNICAL DATA | VENEER INSPECTION LINE

Veneer moisture, thickness, and density detection significantly boosts to quality and energy management in wood processing companies. The Grenzebach veneer inspection line system can instantaneously measure each feature in an offline solution or inside the production line for evaluation.

The new system is preferably used upstream and downstream from the dryer for optimum process control.

Reliable detection of moisture levels of more than 140 %

The non-contact measuring system can also be used directly after veneer peeling because even very high moisture levels of 60 to more than 140 % abs. dry are handled with great accuracy. At the same time, the veneer thickness can be determined continuously so that control of the peeling line is supported. This makes the system an ideal choice for the so-called "green" beginning of the production line.

Stable readings for different wood species

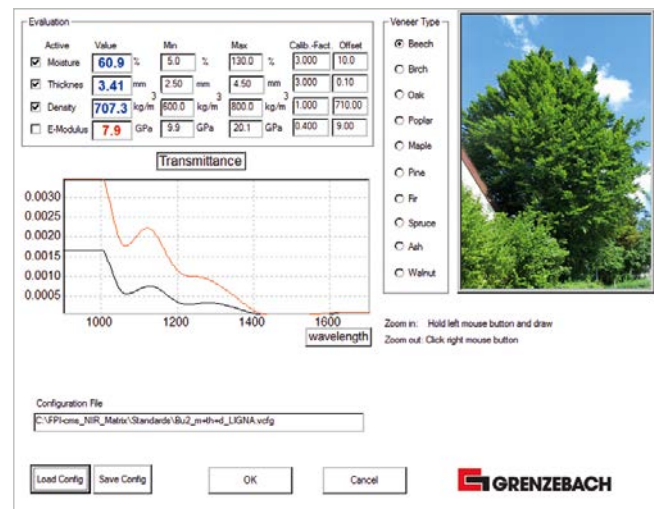
A unique technology optimizes the stability of the readings, taking into account varying gaps between the sheets and the waviness of the veneers. The innovative system includes all functions implemented for the major wood species, such as beech, birch, oak, or poplar. A configuration for others is possible on request at any time.

Advantages

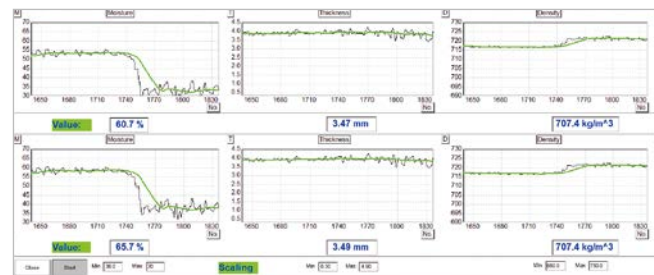
- » Moisture, thickness, and density can be detected individually or at the same time, either in the form of a mapping or by a trend over time
- » Handles moisture levels of more than 140 %
- » Contactless detection with good measurement accuracy
- » Flexible, modular software setup
- » Handles all wood species and veneers from 0.3 mm to about 4 mm thickness
- » Moisture, thickness, and density detection combined in one system

New feature: density measurement within or outside of the line

- » Density profile from outer to inner log radius
- » Detects local density variations due to decay or knots
- » Refine the sorting and quality separation by density values



Veneer control configuration



Scan mapping example: moisture, thickness, density

Grenzebach Corporation

10 Herring Road
30265 Newnan, Georgia
Phone: +1 770 253-4980
E-mail: wood@grenzebach.com

Version 04|2023