



# **New Generation of Roller Dryer Thermojet Novaroll 4000**

  
**GRENZBACH**

# New generation of Roller Dryers Thermojet Novaroll 4000 up to 8 decks and up to 6.2 meters working width

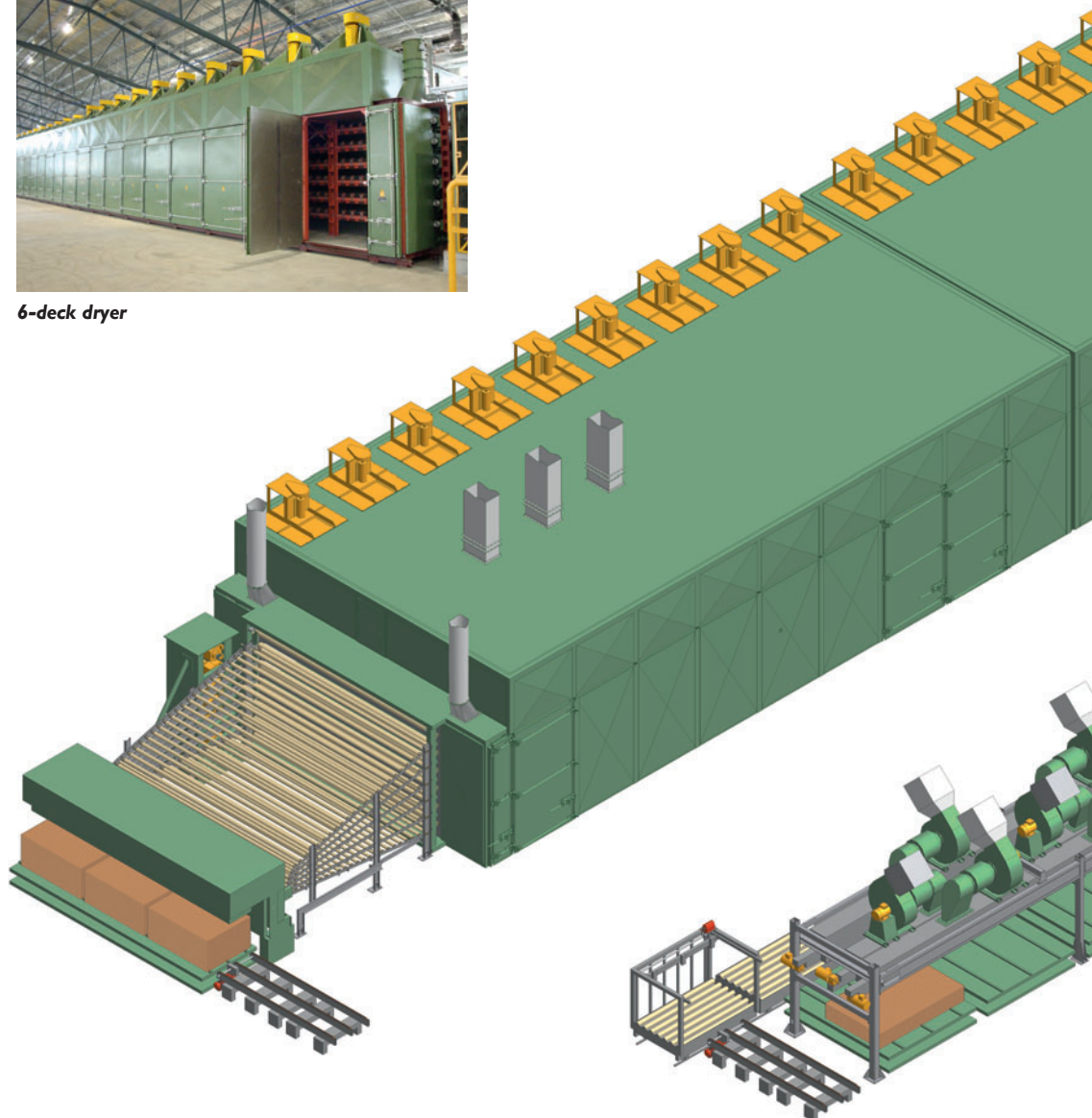
Whether as a complete line or as single components, for simple or for complicated production processes, based on our long experience in drying we offer technology of high standards with best results.

## Technological features and improvements

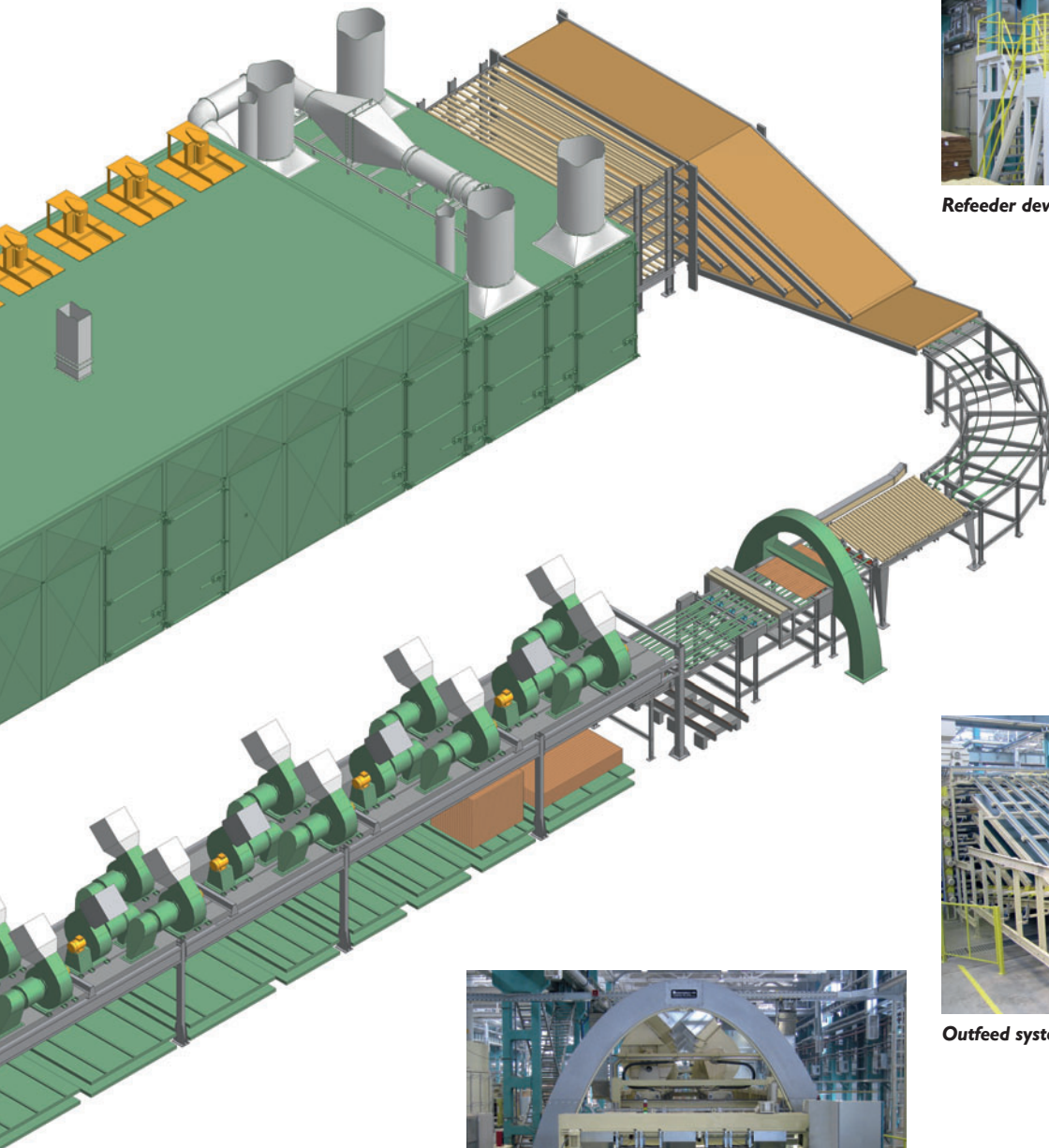
- No need for special foundations
- Fast installation
- Reduced number of parts
- New door design
- Improved Sealing System
- Airlock system
- Better heat distribution
- Better air distribution
- More even drying
- Improved veneer transport
- Higher drying capacity
- Higher energy efficiency
- Good accessibility
- Easy maintenance



*6-deck dryer*



*Automatic infeed system*



**Refeder device**



**Outfeed system**



**High speed colour scanning and grading system**



**High speed veneer stacker**

# Thermojet Novaroll 4000

The features of GRENZEBACH's new generation of modular roller dryers, the THERMOJET NOVAROLL 4000, reflect the company's extensive experience gained during its long history in the field of drying highest quality peeled veneer.

In response to the needs of the plywood industry, GRENZEBACH has brought together all time-tested and proven features of its equipment sold to customers all over the world and combined them into a new dryer for best results in state-of-the-art veneer drying.

Following our tradition of being pioneers in veneer drying technology, we have optimized the drying process itself by means

of flow-optimized air distribution zones and a better balanced air volume over all decks to obtain more uniform drying results.

Heating surfaces made to a new design provide enhanced thermal efficiency and reduced pressure losses. The result is a higher drying capacity at lower energy consumption, and a high quality final product.

The entire dryer skin itself, from the seal welded insulated floor up to the seal welded upper duct, is made of aluminized sheet metal. The same material is used for the floating skin type dryer doors. Each of these access doors extends over an entire section. It can be opened with one hand and features a special door hinge design. The door seals are fixed to the frame and consist of a flexible stainless steel construction covered with

Kevlar® reinforced fabric. Soft bends instead of sharp ninety-degree corners ensure a long-lasting and perfect sealing effect. In combination with the thick insulation, this well-engineered system ensures minimum heat losses and fast, homogeneous heat-up times. The dryer rail system is simply bolted to the flat concrete floor – there is no need for a special foundation. The special rail guiding system ensures a uniform thermal expansion of the dryer throughout its entire lifetime.

To solve the problems of condensation and resinification, GRENZEBACH has developed infeed and outfeed air lock systems as well as a fresh air preheating device. In combination

with the right insulation, these devices ensure that there will be no condensation on the hot wall between the air locks and the dryer.

Simple and well designed parts produced using laser cutting and bending technology provide for easier access, easier cleaning and reduced maintenance for the whole dryer system.

This new generation of roller track dryers features the excellent reliability, minimized downtimes and highest final product quality for which all GRENZEBACH systems stand out. Each modular dryer section is 2.25 m long. These modules are combined to obtain the required dryer length. Four, six or eight deck dryers with a working width of 4 m, 4.8 m, 5 m, 5.8 m and 6.2 m are available.



## **GRENZEBACH BSH GmbH**

Rudolf-Grenzebach-Straße 1  
36251 Bad Hersfeld, Germany  
Phone: +49 (0)66 21/81-0  
Fax: +49 (0)66 21/81-9 3613  
e-mail: info.bsh@grenzebach.com

## **GRENZEBACH Mashtech Ltd.**

No. 61 Novocheremushkinskaya Street,  
Moscow 117418, Russia  
Phone: +7 (495) 626 5881  
Fax: +7 (495) 626 5882  
e-mail: info.gmos@grenzebach.com

## **GRENZEBACH Maschinenbau GmbH**

Albanusstraße 1–3, Hammlar  
86663 Asbach-Bäumenheim, Germany  
Phone: +49 (0)9 06/9 82-0  
Fax: +49 (0)9 06/9 82-2108  
e-mail: info@grenzebach.com

## **GRENZEBACH Machinery (Shanghai) Ltd.**

388 Minshen Road, Songjiang Industrial Zone  
Shanghai 201612, P.R. China  
Phone: +86 (21) 5768-4982  
Fax: +86 (21) 5768-5220  
e-mail: info.gs@grenzebach.com

## **GRENZEBACH Corporation**

10 Herring Road  
Newnan, Georgia 30265, USA  
Phone: +1 (770) 253-4980  
Fax: +1 (770) 253-5189  
e-mail: info.gn@grenzebach.com

## **GRENZEBACH Machinery (India) Pvt. Ltd.**

Cluster 3, Unit 12, Kumar City,  
Vagadon Sheri, Pune 411014, India  
Phone: +91 (20) 2703-1631  
Fax: +91 (20) 2703-0635  
e-mail: info.gpun@grenzebach.com

[www.grenzebach.com](http://www.grenzebach.com)